



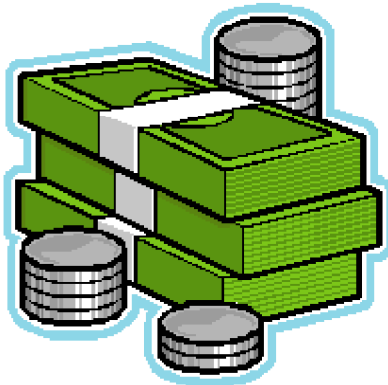
[Payment Calculator](#)

[Vendor Sales Center](#)

January 2008

## Selling Payment

Did you know the fastest way you can upsell a customer is through offering a lease payment?



- For example, if you are selling a business phone system for \$10,000, the 60-month lease payment would be **\$223.40**.
- Now let's say you want to add in cables and cabinets for \$3,000. The new 60-month lease payment would be **\$290.42**.
- Now let's say you want to add in an extended warranty for \$2,000. The new 60-month payment would be **\$330.30**.
- Now let's say you want to add in a 2% commission for yourself and present the total package as your "All Inclusive Platinum Package" including phone system, cables, cabinets, and extended warranty. The new 60-month lease payment would be **\$336.91**.

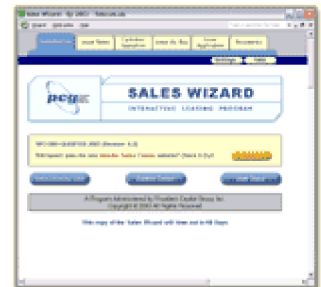
It's that easy! You just increased your sale by **\$5,000** and made **\$300** in extra commission and the change in payment is minimal! Plus, you've met your customer's total needs!

• [Click here to start quoting today!](#)

## The New First Quarter 2008 Sales Wizard is Up!

There are many new features added to this release including new business rates and the ability to add your contact information right onto the customer quotation.

• [Click here to download the new Sales Wizard.](#)





## Are you getting paid as fast as you can?

- You can get paid 50% of your total sales order upfront on any credit approval lease over \$10,000.
- [Click here to request a Prefunding Enrollment Form.](#)
- You can also get paid by **ACH** on the same day as completion!
- [Click here to request an ACH application for your business.](#)

### **Customer Care Pledge**

**PCG pledges to be the *Business Partner you can count on!***  
For an application or online quote visit [www.vendorsalescenter.com](http://www.vendorsalescenter.com)  
[info@provcap.com](mailto:info@provcap.com)  
800-877-8056 x111

*“The difference between try and triumph is just a little umph!”  
:::Marvin Phillips:::*

[Click here](#) to be added to the Provident Capital Group mailing list to receive our newsletter and special offers.

You are receiving this message because you are either a Provident Capital Group customer, business partner, vendor or associate or you have specifically requested information on Provident Capital Group. Provident Capital Group is committed to respecting your privacy. If you would not like to receive future Provident Capital Group newsletters and would like to be removed from our distribution list please [click here to unsubscribe](#). Any questions you might have regarding Provident Capital Group or this mailing can be directed to [info@provcap.com](mailto:info@provcap.com) or via telephone at 800-877-8056 x111. For postal mail correspondence, Provident Capital Group · 105 Fairway Terrace Mount Laurel, NJ 08054.

©2008 Provident Capital Group. All Rights Reserved

---

[Click here to get your own E-Newsletter](#)  
E-Newsletter Services powered by [Amphion Technologies, Inc.](#)